

**ITEM 64. PARKING - CHIPPENDALE PARKING CHANGES - BALFOUR
STREET CHIPPENDALE – NORTH OF MEAGHER STREET**

TRIM RECORD NO: 2015/035573

RECOMMENDATION

It is recommended that the Committee endorse the allocation of parking on Balfour Street, Chippendale as follows:

- (A) Western side between the points 11.4 metres and 18.8 metres (1 car space) north of Meagher Street as “2P Ticket 8am-10pm”.
- (B) Western side between the points 10.8 metres and 26.8 metres (3 car spaces) north of Teggs Lane as “2P Ticket 8am-10pm Permit Holders Excepted Area 24”.
- (C) Western side between the points 15.7 metres and 31.0 metres (3 car spaces) north of Little Queen Street as “Loading Zone 8.30am-5pm Mon-Fri” and “2P Ticket 5pm-10pm Mon-Fri, 8am-10pm Sat, Sun and Public Holidays, Permit Holders Excepted Area 24”.
- (D) Western side between the points 6.7 metres and 13.4 metres (1 car spaces) north of Dick Street as “2P Ticket 8am-10pm Permit Holders Excepted Area 24”.
- (E) Eastern side between the points 6.2 metres and 25.3 metres (3 car spaces) south of Wellington Street as “2P Ticket 8am-10pm”.
- (F) Eastern side between the points 25.3 metres and 39.6 metres (2 car spaces) south of Wellington Street as “2P Ticket 8am-10pm Permit Holders Excepted Area 24”.
- (G) Eastern side between the points 6.0 metres and 12.6 metres (1 car space) south of Queen Street as “2P Ticket 8am-10pm”.
- (H) Eastern side between the points 8.7 metres and 18.7 metres (2 car spaces) south of Henrietta Street as “2P Ticket 8am-10pm”.
- (I) Eastern side between the points 18.7 metres and 29.8 metres (2 car spaces) south of Henrietta Street as “Loading Zone 8.30am-5pm Mon-Fri” and “2P Ticket 5pm-10pm Mon-Fri, 8am-10pm Sat, Sun and Public Holidays, Permit Holders Excepted Area 24”.

DECISION

BACKGROUND

On 12 May 2014, Council resolved to “...review the adequacy of existing parking controls in Chippendale to ensure they balance the needs of residents, visitors and local business in light of changing land uses”.

The type and intensity of land use in and near Chippendale is undergoing major change. New housing, education, retail and commercial projects have been completed or are under construction. Within the existing built fabric, new galleries, offices, restaurants and cultural facilities have been established. These changes inevitably increase competition for limited street parking spaces used by residents, visitors, customers and business.

In August 2014, the City wrote to more than 3,400 proprietors in Chippendale seeking feedback on a proposal to extend timed parking to 10pm seven days a week in the area bounded by Cleveland Street, Regent Street, City Road and Broadway.

Timed permit parking in the area east of Abercrombie Street is currently 2P Ticket 8am-6pm seven days a week with an exemption for permit holders.

West of Abercrombie Street, it was proposed to introduce two hour (2P) restrictions without a permit exemption, into a number of currently unrestricted streets.

Following assessment of feedback, it is recommended that the proposal be modified to not proceed with proposed restrictions in currently unrestricted streets west of Abercrombie Street, to introduce off-peak parking restrictions favouring permit holders after loading zone hours expire (evenings and weekends), and to formalise an area for motorcycle parking.

The modified proposal was subsequently adopted by Council at its meeting on 8 December 2014 subject to endorsement by the Local Pedestrian, Cycling and Traffic Calming Committee. Council resolved the following:

- (A) extension of parking restrictions east of Abercrombie Street to 2P Ticket, 8am-10pm, seven days, and that exemptions for permit holders be maintained where they currently exist;
- (B) introduction of additional permit holder exemptions on the northern kerb of Queen Street between points 10 and 20 metres west of Regent Street, and between points 10 and 25 metres west of Balfour Street on the northern kerb of Little Queen Street;
- (C) introduction of timed weekend and/or evening parking restrictions to kerb space currently signposted as Loading Zone; and
- (D) establishment of a weekday motorcycle-only parking zone on Daniels Street.

COMMENTS

The kerb space on parts of Balfour Street, Chippendale between Meagher and Wellington Streets is currently 2P Ticket 8am-6pm seven days a week with an exemption for permit holders. However there are four sections of "2P Ticket 8am-6pm Mon-Fri, 8am-12.30pm Sat" as well as two sections of "Loading Zone 8.30am-5pm Mon-Fri".

Some of the kerb space will be changed to "2P Ticket 8am-10pm Permit Holders Excepted Area 24" in accordance with the Resolution of Council from 8 December 2014.

The kerb space with existing Loading Zones will be changed to introduce a timed weekend and evening parking restriction in accordance with the Resolution of Council from 8 December 2014. The kerbspace will be changed to "Loading Zone 8.30am-5pm Mon-Fri" and "2P Ticket 5pm-10pm Mon-Fri, 8am-10pm Sat, Sun and Public Holidays, Permit Holders Excepted Area 24".

The other parts of the kerb space will be changed to "2P Ticket 8am-10pm". An exemption for permits does not currently exist in this kerb space so no new exemption is proposed in accordance with the Resolution of Council from 8 December 2014.

The proposed changes would limit any vehicle which does not have a permit to two (2) hours of parking where the signs are installed.

Residents with an Area 24 (Chippendale) parking permit will be exempt from the 2 hour time limit and the ticket parking charges where the exemption applies.

CONSULTATION

The City consulted local residents and business in the area. There were over 3,400 letters sent out with 107 submissions received.

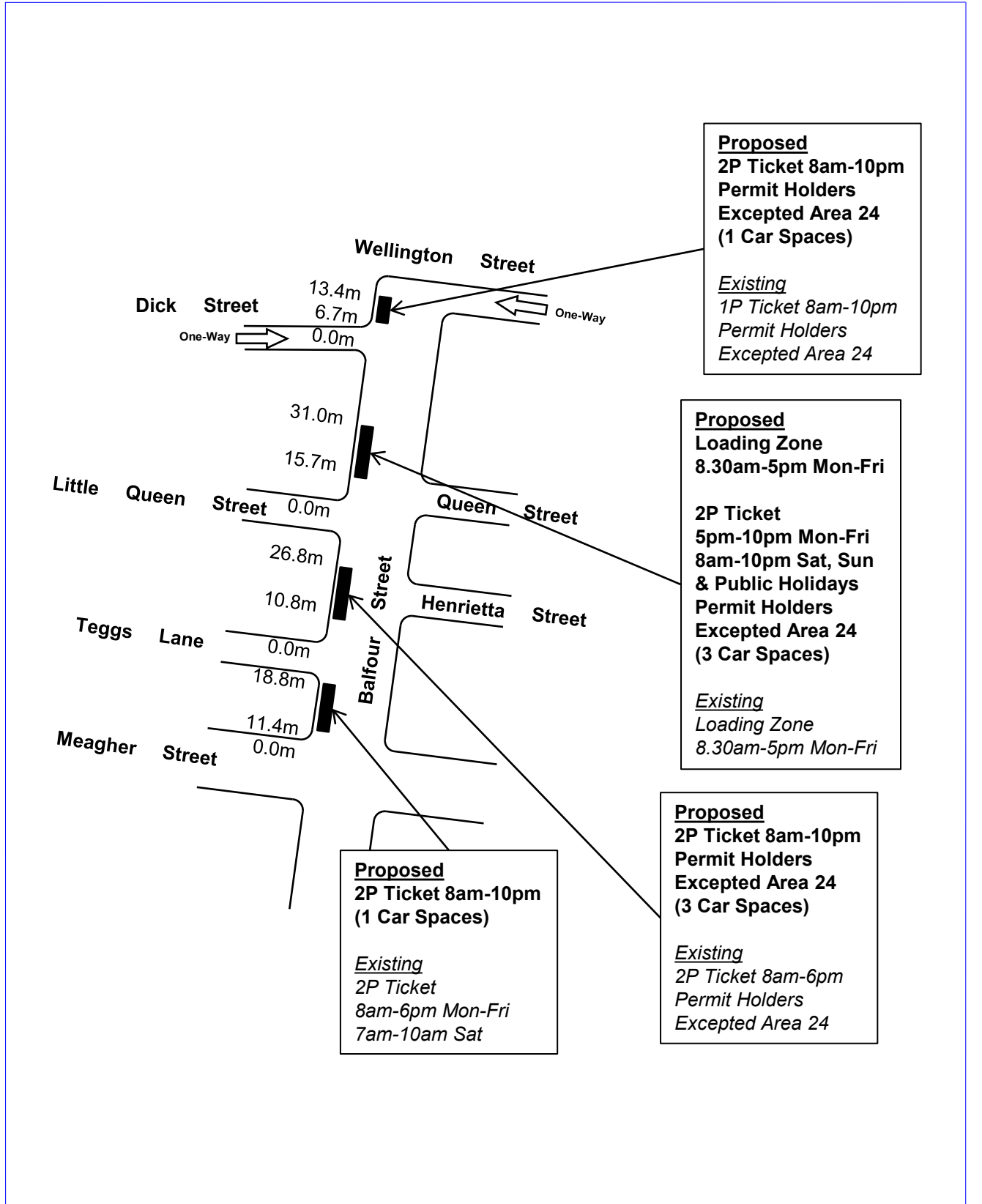
FINANCIAL

Funds are available in the current budget.

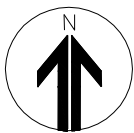
ATTACHMENTS

Parking - Chippendale Parking Changes - Balfour Street Chippendale – North of Meagher Street

Michael Rimac - Engineering Traffic Officer



PROPOSAL



BALFOUR STREET, CHIPPENDALE - North of Meagher St
CHIPPENDALE PARKING REVIEW



Proposed
2P Ticket 8am-10pm
(3 Car Spaces)

Existing
 2P Ticket
 8am-6pm Mon-Fri
 8am-12.30pm Sat

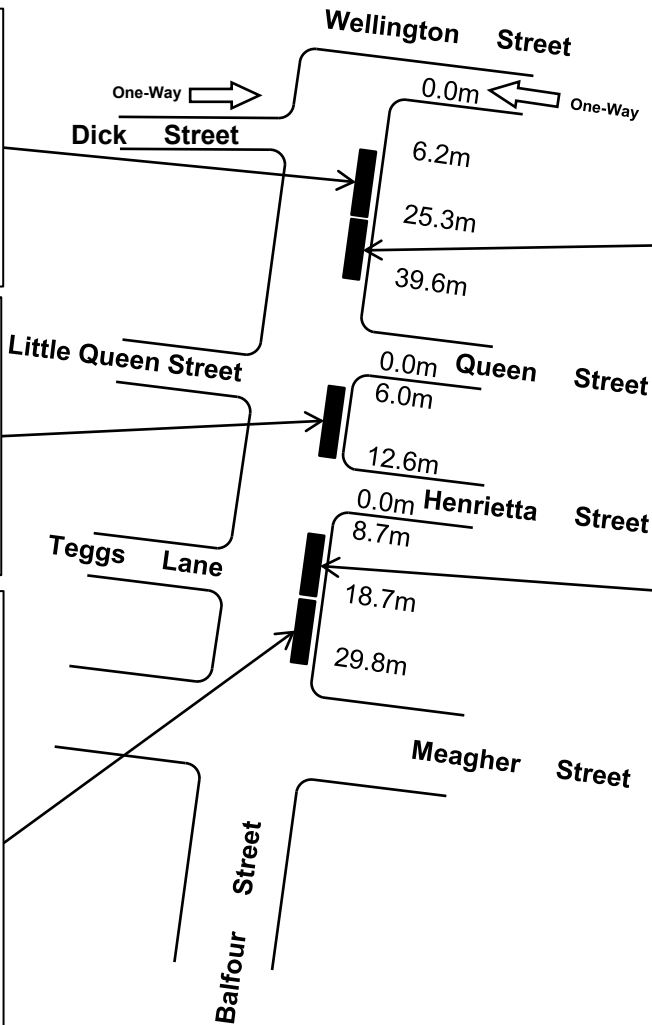
Proposed
2P Ticket 8am-10pm
(1 Car Spaces)

Existing
 2P Ticket
 8am-6pm Mon-Fri
 8am-12.30pm Sat

Proposed
Loading Zone
8.30am-5pm Mon-Fri

2P Ticket
5pm-10pm Mon-Fri
8am-10pm Sat, Sun
& Public Holidays
Permit Holders
Excepted Area 24
(2 Car Spaces)

Existing
 Loading Zone
 8.30am-5pm Mon-Fri



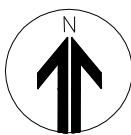
Proposed
2P Ticket 8am-10pm
Permit Holders
Excepted Area 24
(2 Car Spaces)

Existing
 2P Ticket
 8am-6pm Mon-Fri
 Permit Holders
 Excepted Area 24

Proposed
2P Ticket 8am-10pm
(2 Car Spaces)

Existing
 2P Ticket
 8am-6pm Mon-Fri
 8am-12.30pm Sat

PROPOSAL



BALFOUR STREET, CHIPPENDALE - North of Meagher St
 CHIPPENDALE PARKING REVIEW



